



## 23 Palmerston Road

Boscombe, Bournemouth, BH1 4DB

£1,300 Per Month



## Road Map



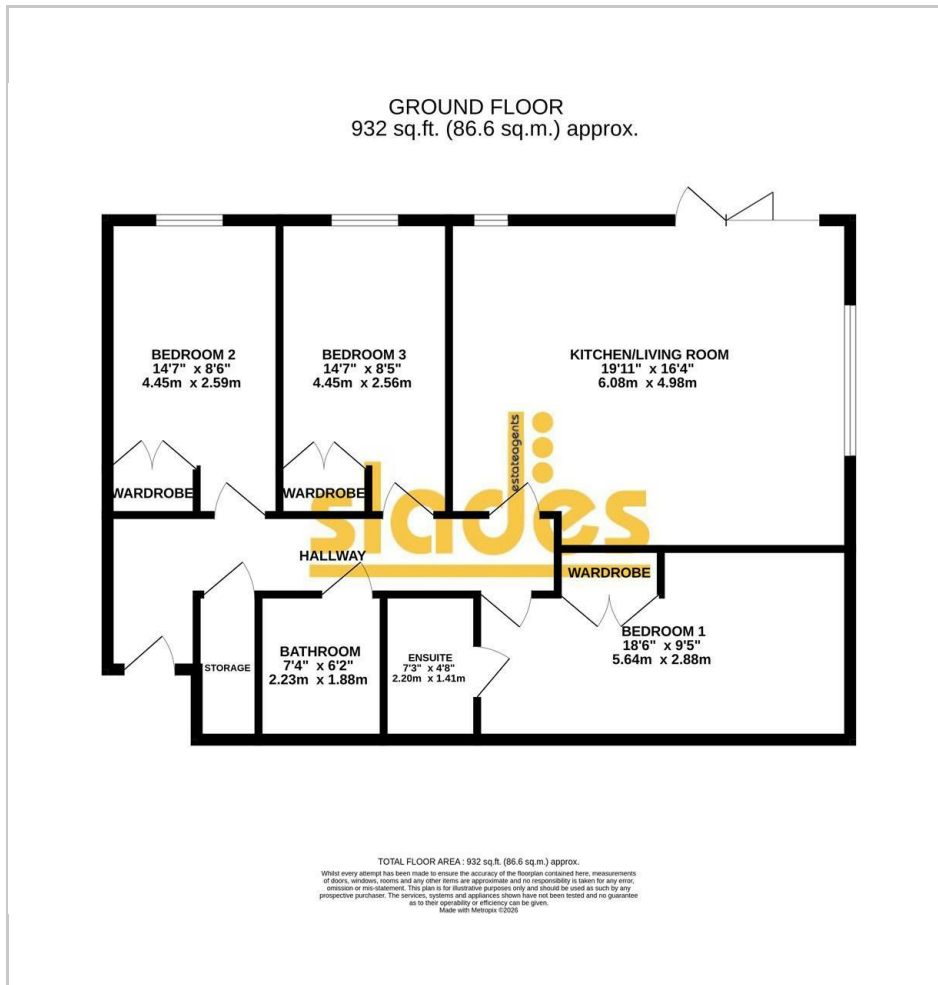
## Hybrid Map



## Terrain Map



## Floor Plan



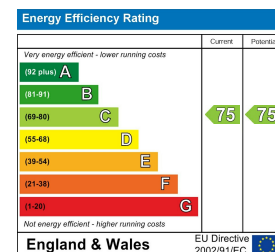
- MODERN DEVELOPMENT IN CENTRAL BOSCOMBE
- 3 LARGE DOUBLE BEDROOMS
- 2 LUXURY BATH/ SHOWER ROOMS
- EXTENSIVELY FITTED KITCHEN
- BI FOLD DOORS LEADING ONTO PRIVATE TERRACE
- LIFT & STAIRS TO FIRST FLOOR
- SECURE ALLOCATED PARKING
- UNFURNISHED
- AVAILABLE NOW

## Viewing

Please contact our Slades Estate Agents Office on 01202548855 if you wish to arrange a viewing appointment for this property or require further information.



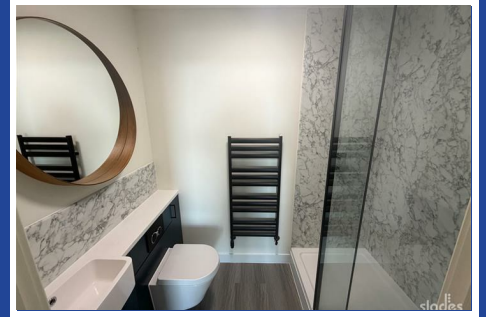
## Energy Efficiency Graph



These particulars, whilst believed to be accurate are set out as a general outline only for guidance and do not constitute any part of an offer or contract. Intending purchasers should not rely on them as statements of representation of fact, but must satisfy themselves by inspection or otherwise as to their accuracy. No person in this firm's employment has the authority to make or give any representation or warranty in respect of the property.

301 Wimborne Road, Bournemouth, BH9 2AA  
Tel: 01202548855 Email: [info@sladesproperty.co.uk](mailto:info@sladesproperty.co.uk) <https://www.sladesproperty.co.uk>

**\*\* GATED DEVELOPMENT \*\* An UNFURNISHED 3 BEDROOM, 2 BATHROOM bungalow style apartment extending to over 900sq ft living accommodation close to Boscombe's award wining beaches. Available NOW**



OPENPLAN LIVING / KITCHEN AREA

BEDROOM ONE

EN SUITE SHOWER ROOM

BEDROOM TWO

BEDROOM THREE

FAMILY BATHROOM

OUTSIDE

The property benefits from a LARGE OUTSIDE TERRACE accessed by the large bifold doors from the living area which is laid to a mixture of decking boards and artificial lawn with built in box style raised flower bed surrounding. The garden area enjoys complete privacy from the surrounding privacy screens. There is an ALLOCATED PARKING within a secure parking area. There are outside bin stores and bike stores and a large communal terrace to be enjoyed by all the flats.



